

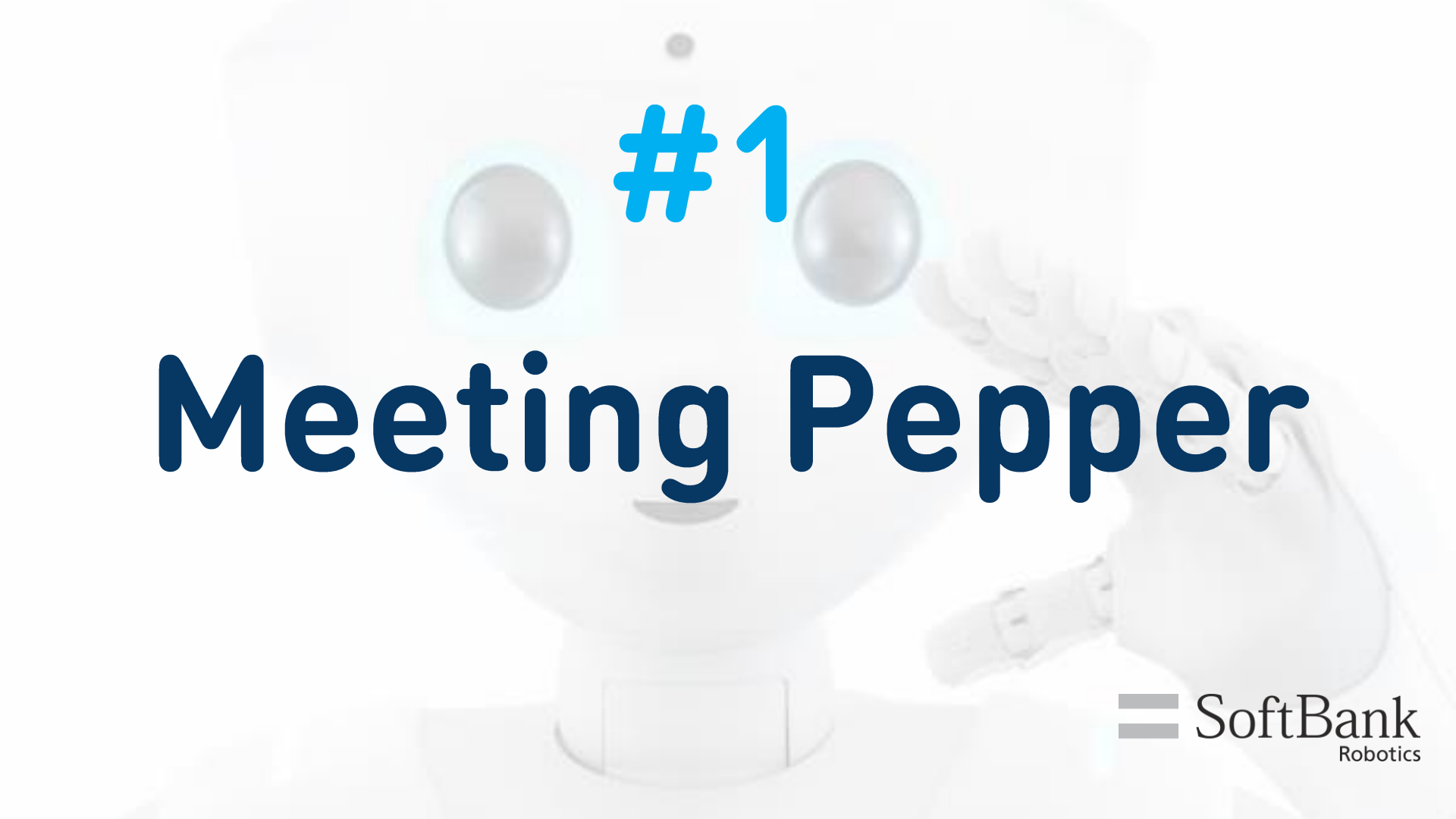
A close-up, slightly blurred image of the Pepper robot's head and upper torso. The robot has large, expressive blue eyes and a small, curved mouth. It is white with some blue accents around the eyes.

Pepper Master Training

Introduction to Pepper

March 2017

- # 1 Meeting Pepper**
- # 2 Unboxing and preparing Pepper**
- # 3 Operating Pepper**
- # 4 Choosing Pepper's location**
- # 5 Interaction with Pepper**
- # 6 Daily maintenace**
- # 7 Reboxing Pepper**

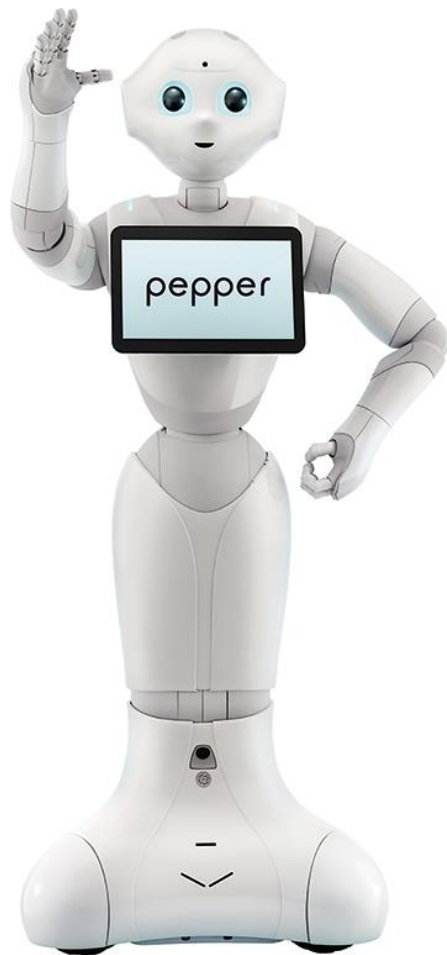
A white Pepper robot is shown from the chest up, with its head and eyes visible. The robot's eyes are glowing blue. The background is a light blue gradient.

#1

Meeting Pepper

1 Meeting Pepper

I am
Pepper

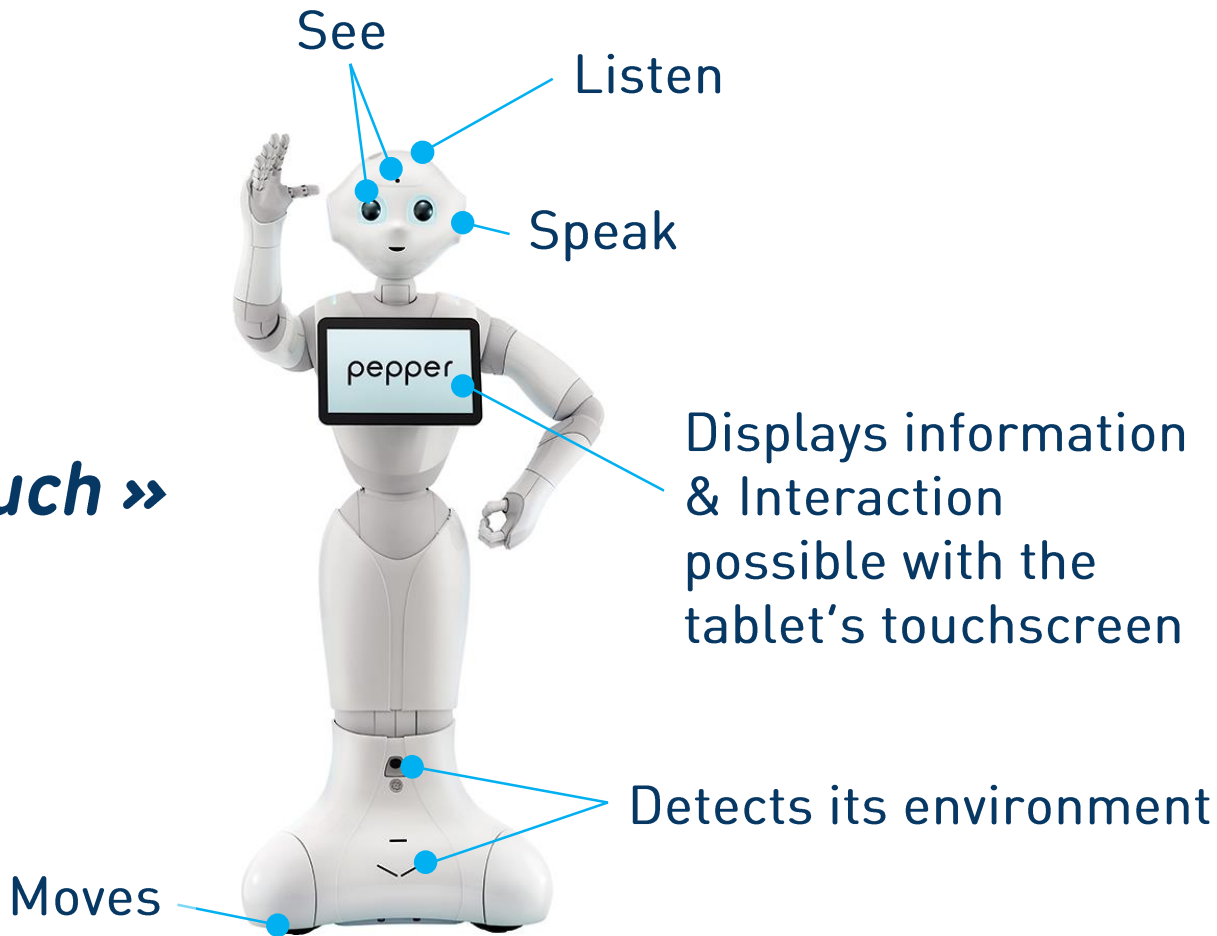


1 Meeting Pepper

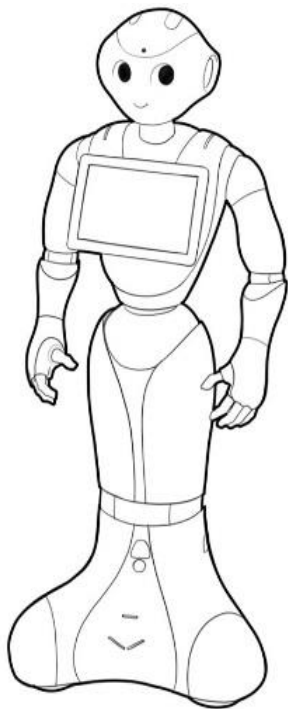
« *Social
humanoid robot* »

« *Voice and Touch* »

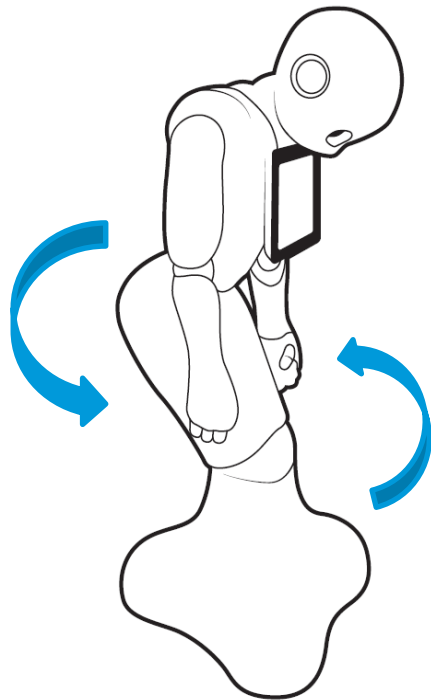
« *Helping
employees* »



1 Meeting Pepper



Standing Posture



Safe Posture

1 Meeting Pepper



Wrong
posture

Standing Posture

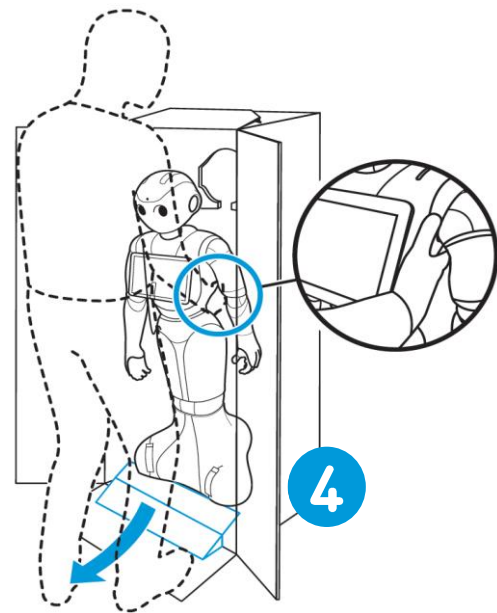
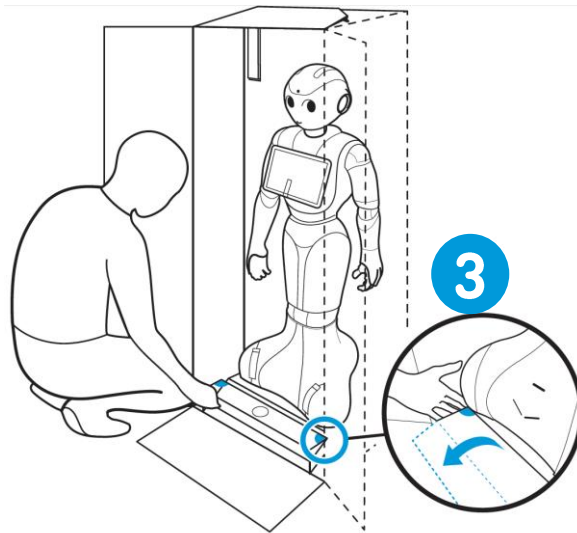
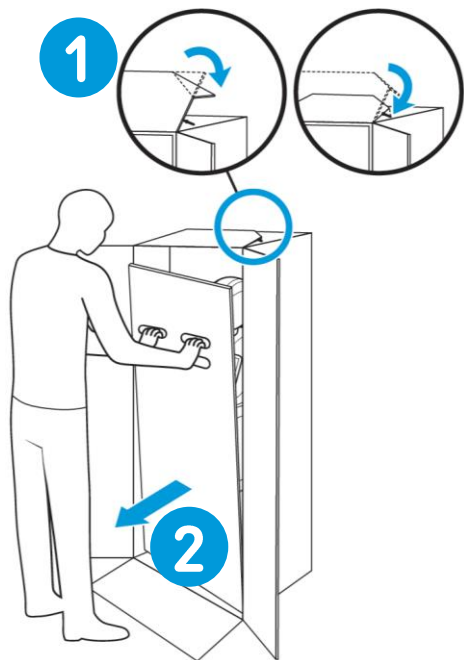
Safe Posture

A blurred background image of the Pepper robot, a white, humanoid robot with large, expressive eyes and a friendly appearance. It is positioned centrally, with its head and upper torso visible. The robot's eyes are large and circular, and it has a small, rounded head. The background is a light, neutral color, making the robot stand out.

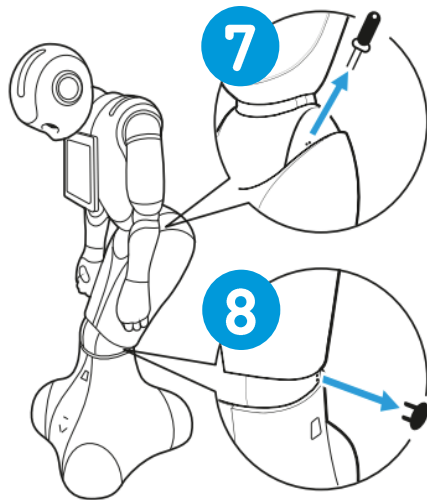
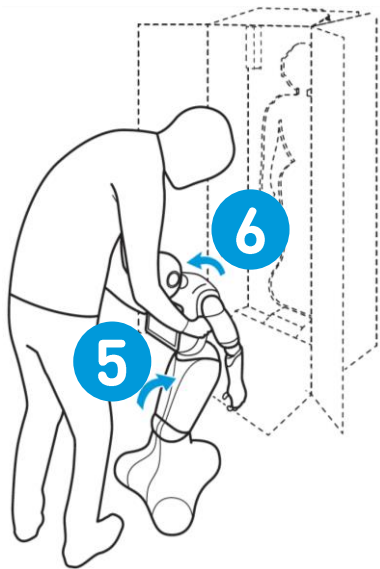
#2

Unboxing and Preparing Pepper

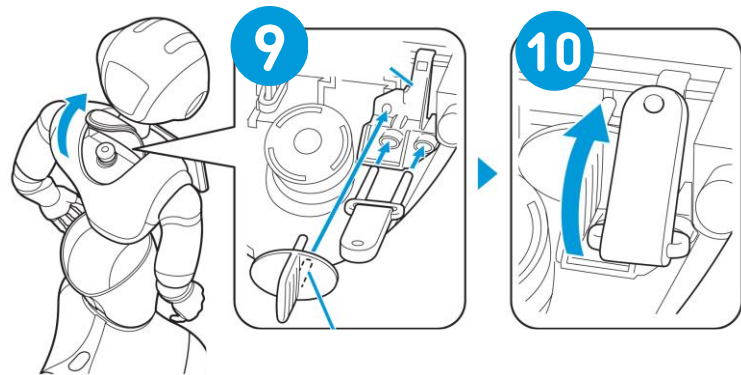
2 Unboxing Pepper



2 Unboxing Pepper

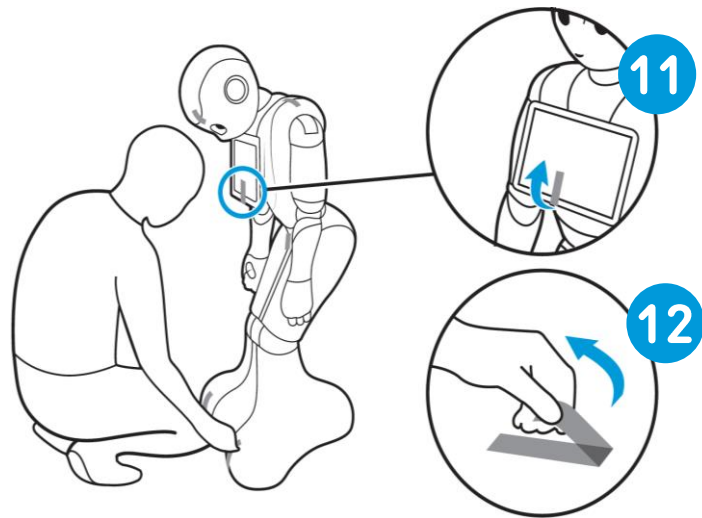


Remove the pins



Store the pins

2 Unboxing Pepper

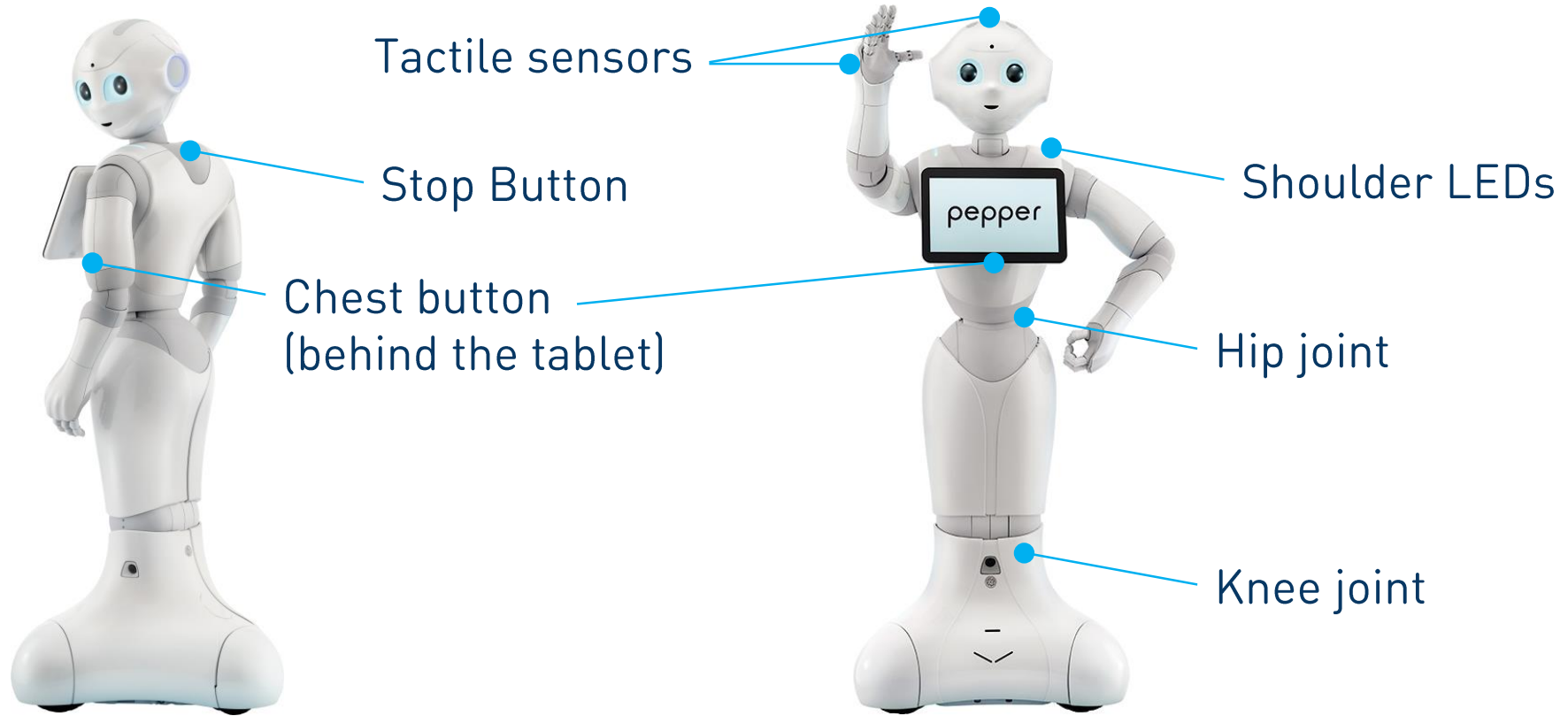


Pepper is ready !

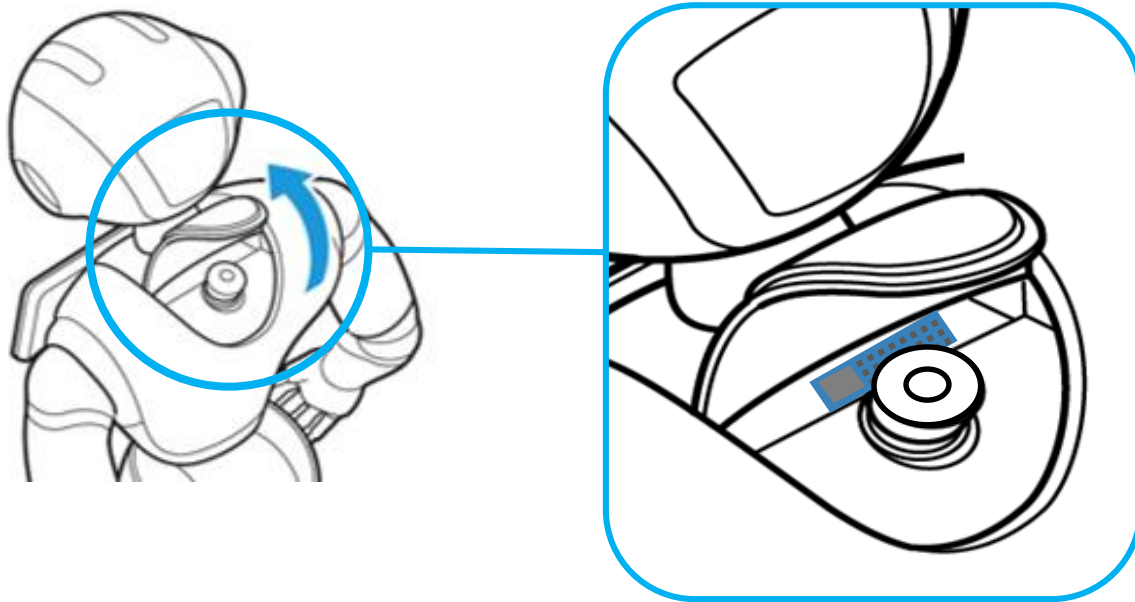
2 Preparing Pepper – More informations about Pepper

**Let's take a closer look
to Pepper.**

2 Preparing Pepper – More informations about Pepper



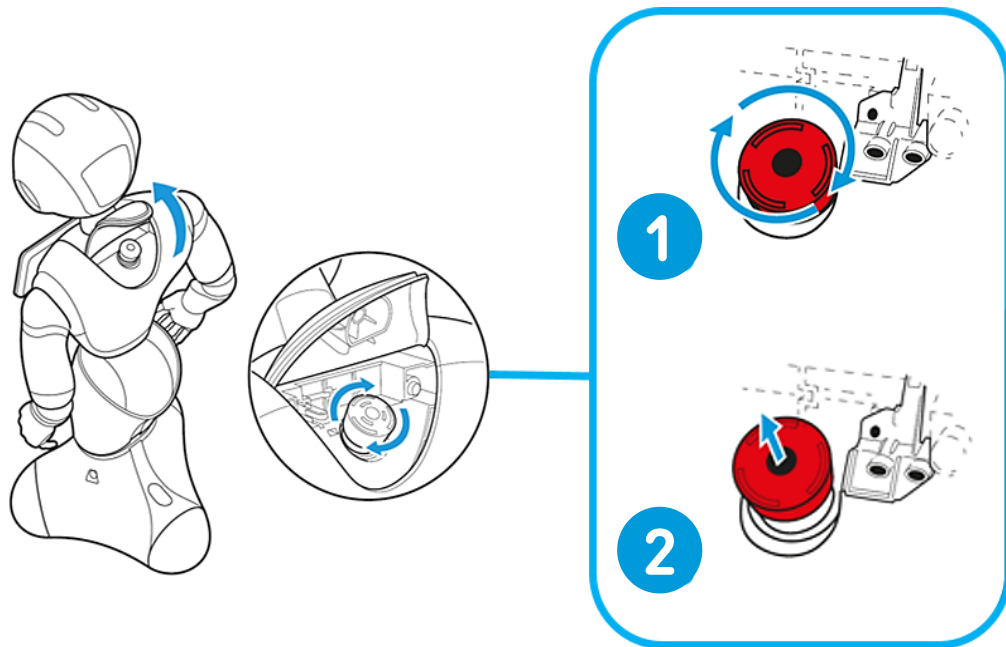
2 Preparing Pepper – Serial Number



Text&Numbers
AP99XXXXXXXXXX
XXXXXXXXXX

Serial Number

2 Preparing Pepper – Unlocking the Stop Button

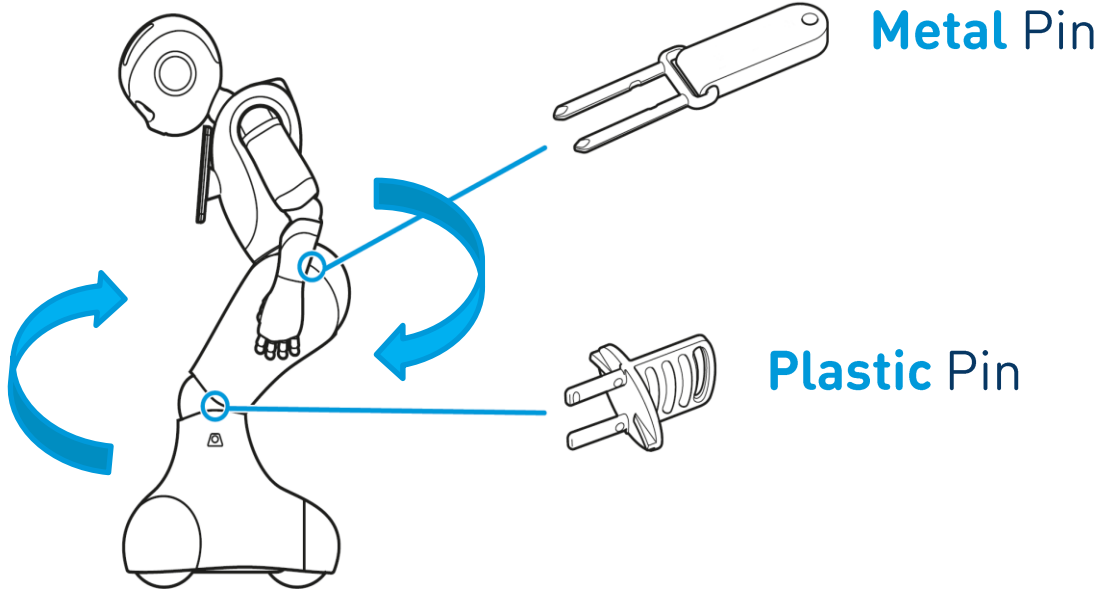


2 Preparing Pepper – Pins

Pins **inserted**



Pepper's Hip and Knee
**can be moved
freely.**

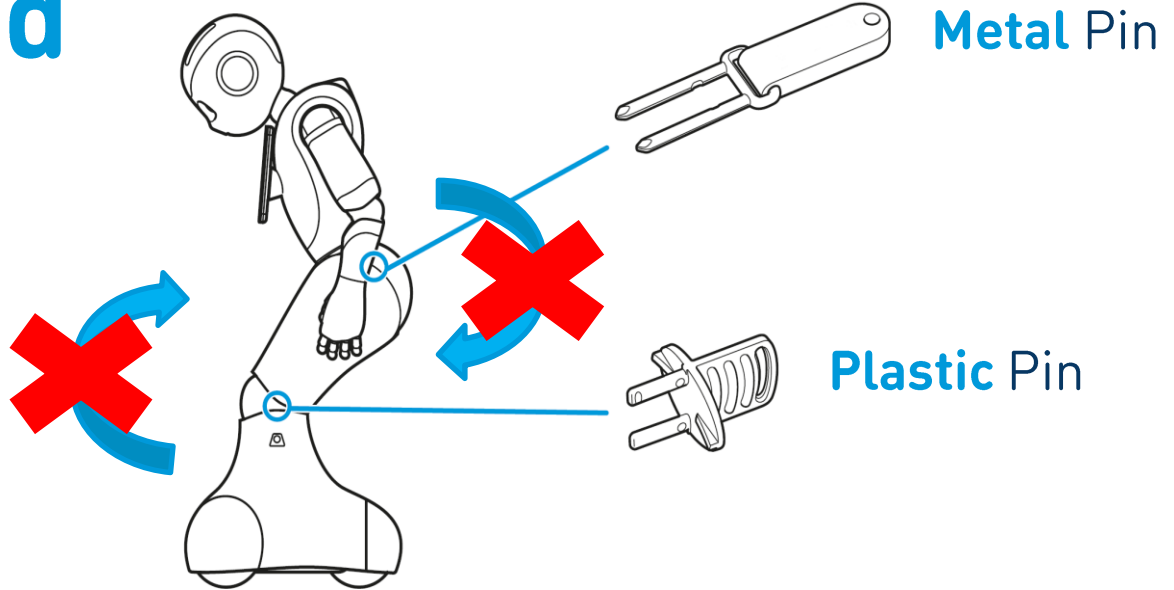


2 Preparing Pepper – Pins

Pins **removed**




Pepper's Hip and Knee
are blocked.



2 Preparing Pepper – Pins

Pins rem

Metal Pin



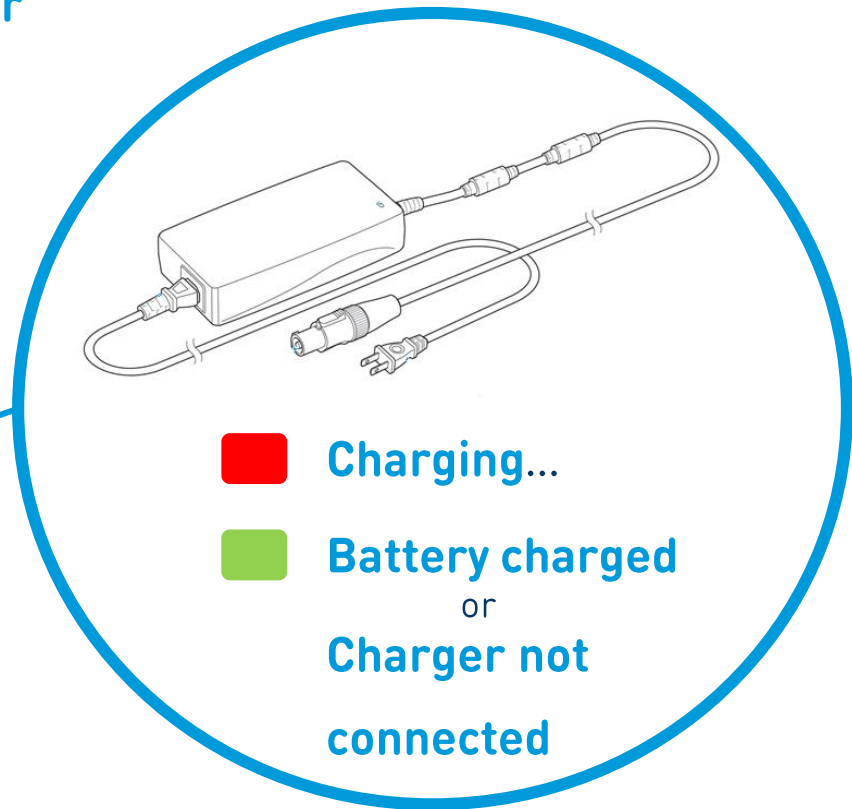
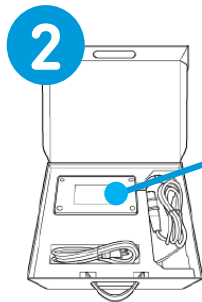
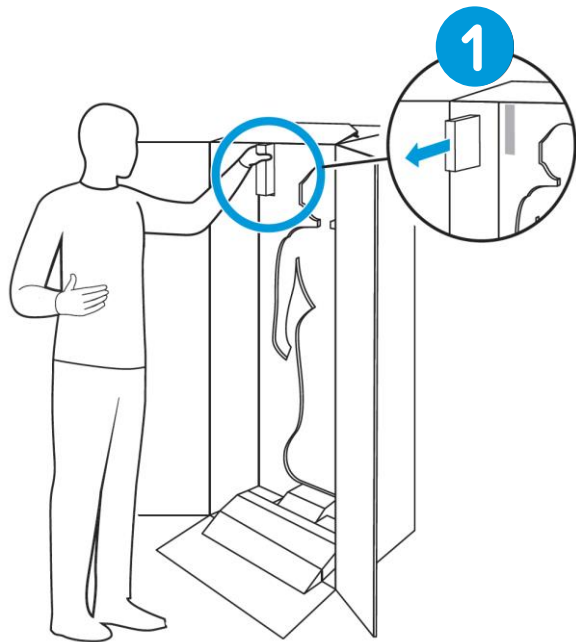
Never insert
Pins when
Pepper is ON.

Elastic Pin

Pepper's Hip and Knee
are blocked.

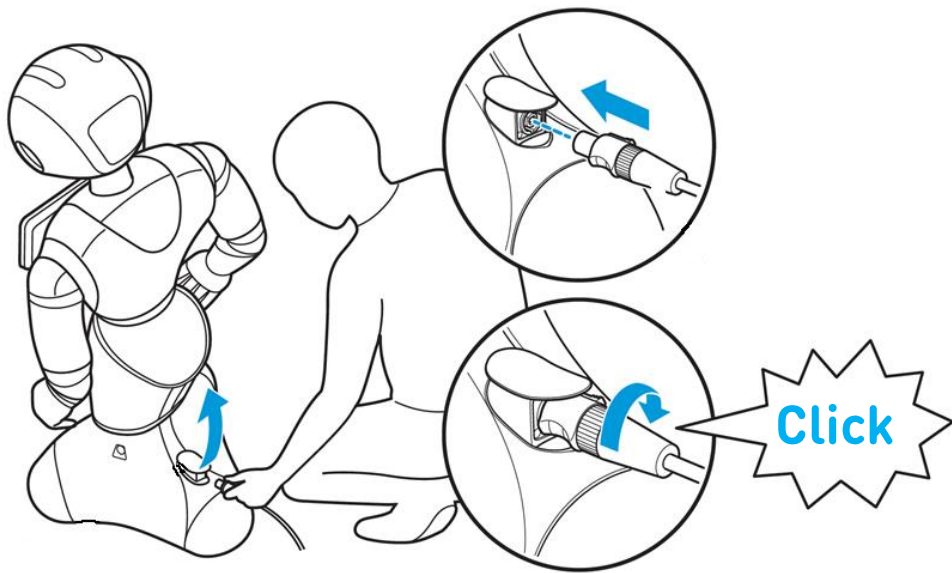


2 Preparing Pepper – Charging Pepper



Get the **accessory** box

2 Preparing Pepper – Charging Pepper



3h30



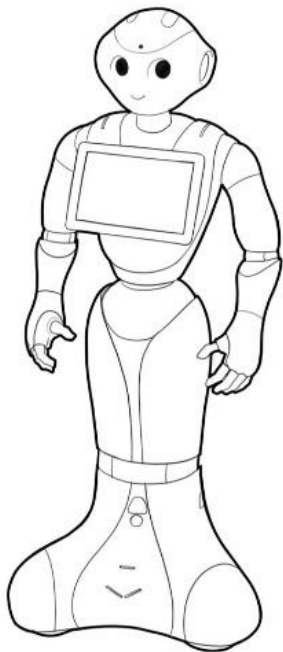
80%

8h



100%

2 Preparing Pepper – Charging Pepper



100%

12h~19h Activity

2 Preparing Pepper

Time to turn **Pepper ON!**

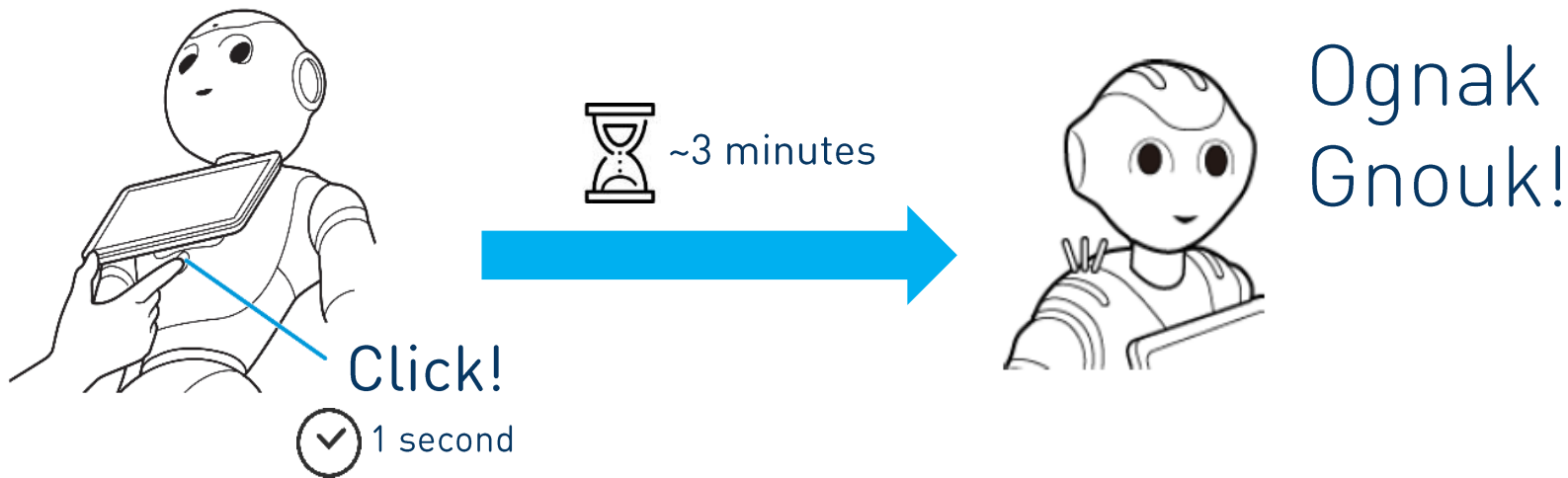
...But how?

A white Pepper robot is shown from the chest up, with its head and eyes visible. The robot's eyes are large, circular, and have a blue glow. The background is a light blue gradient.

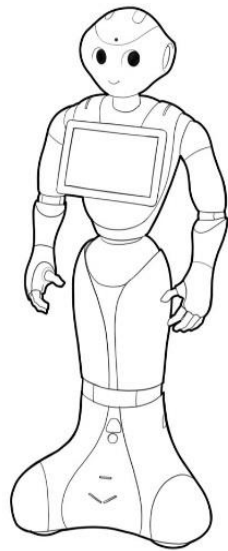
#3

Operating Pepper

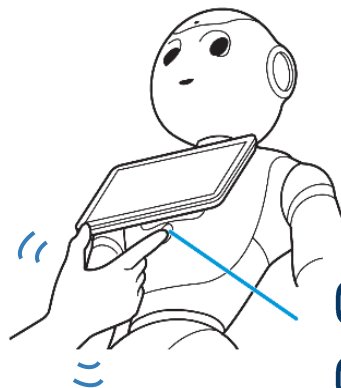
3 Operating Pepper – Turning Pepper ON



3 Operating Pepper – Rest Mode



Initial Posture

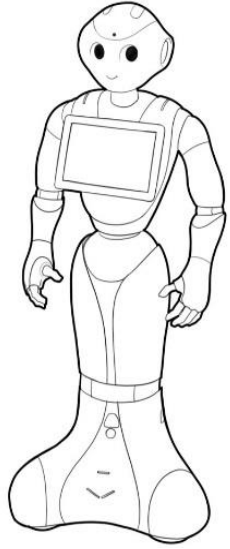


Click!
Click!

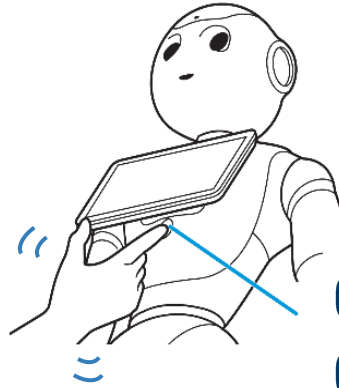


Rest Mode

3 Operating Pepper – Rest Mode



Initial Posture



Click!
Click!



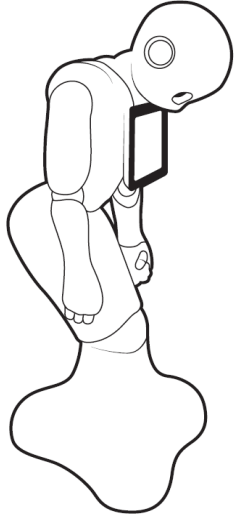
Stops activities

Stops motors



Rest Mode

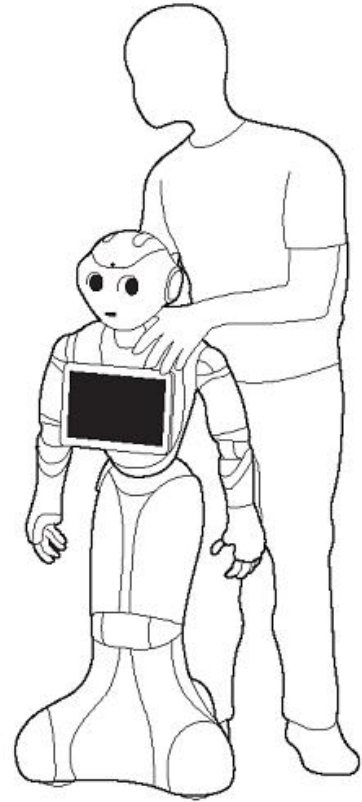
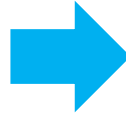
3 Operating Pepper – Moving Pepper



Pepper is
Switched Off or
in **Rest Mode**



Open the
Charging Flap



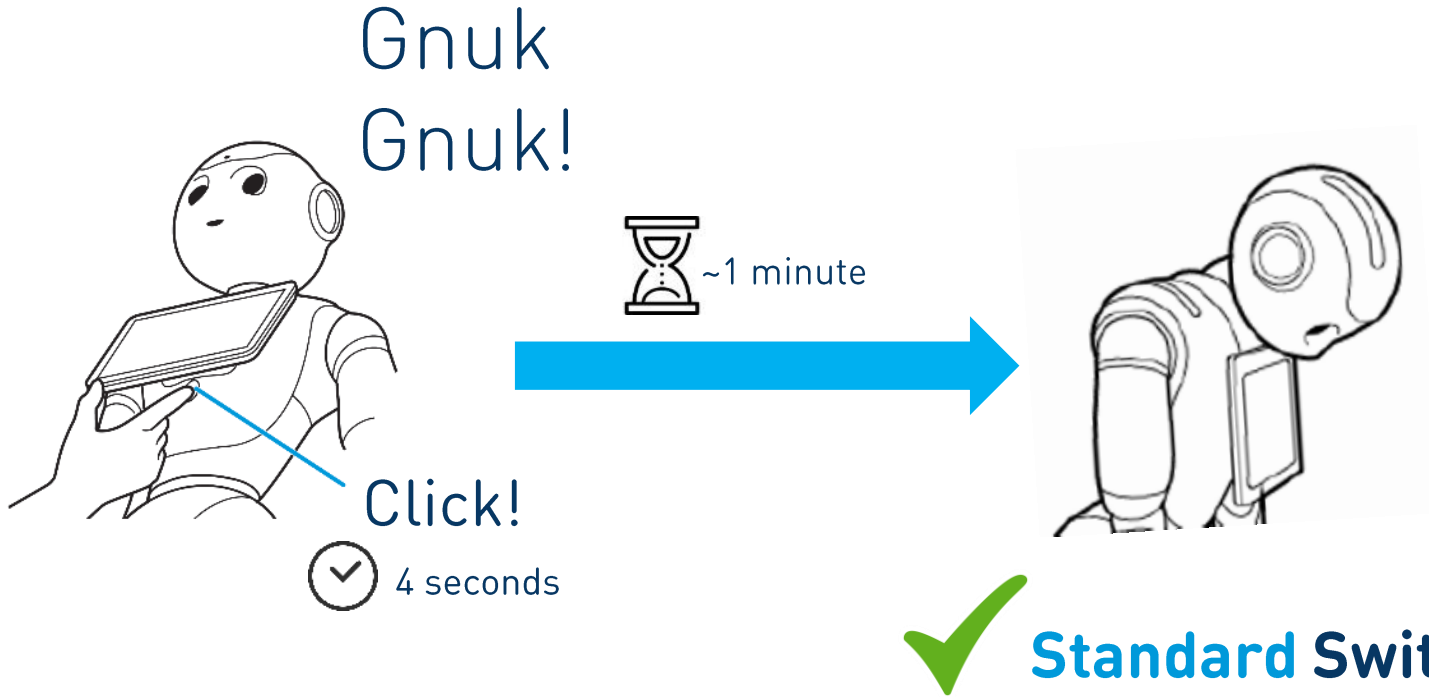
Gently push
Pepper

3 Operating Pepper – Turning Pepper OFF

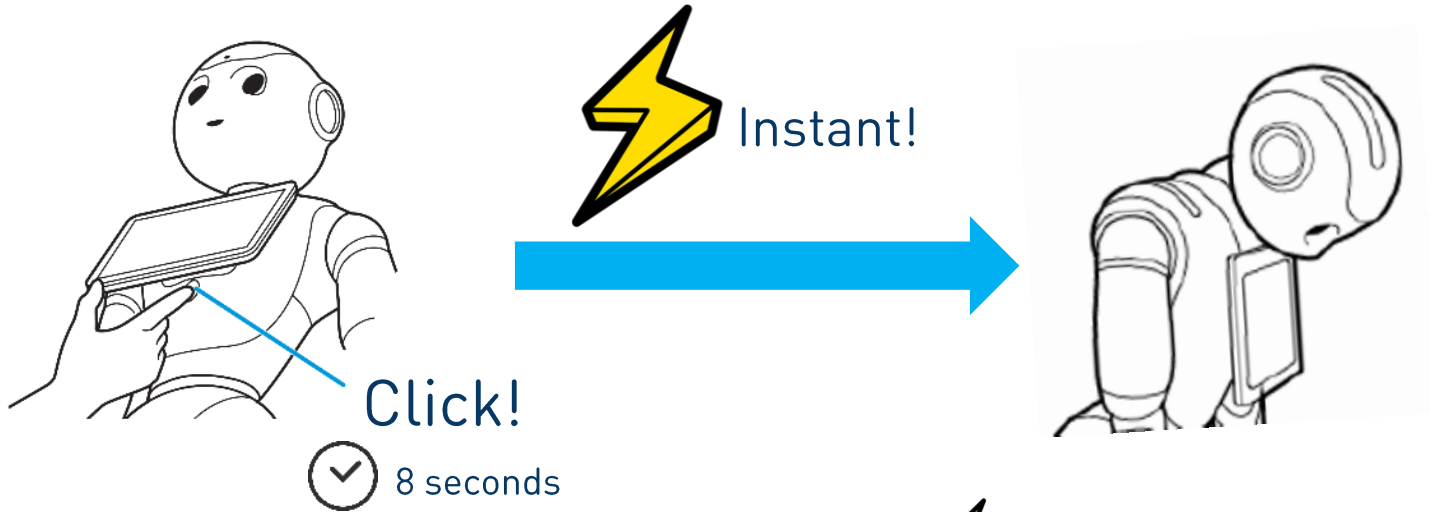
3 ways to turn Pepper OFF:

- Standard Switch OFF
- Forced Switch OFF
- Emergency Switch OFF

3 Operating Pepper – Turning Pepper OFF, Standard Switch OFF



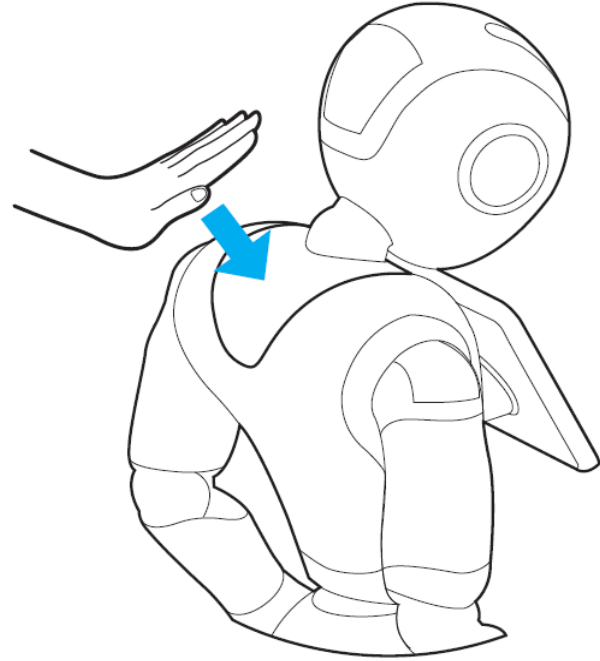
3 Operating Pepper – Turning Pepper OFF, Forced Switch OFF



 **Forced Switch OFF**

3 Operating Pepper – Turning Pepper OFF, Emergency Stop

**In case of
emergency
only.**

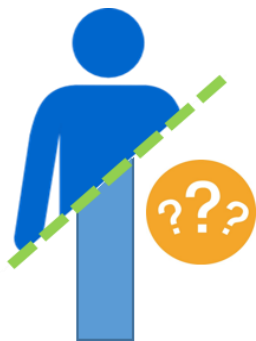


The background of the slide features a faded, light blue image of the Pepper robot. The robot's head, with its two large, circular eyes, is visible in the upper center. Its right arm is extended towards the right side of the frame, with its hand open. The robot's body and base are also visible, though less distinct due to the fading.

#4

Choosing Pepper's Location

4 Choosing Pepper's Location - Context

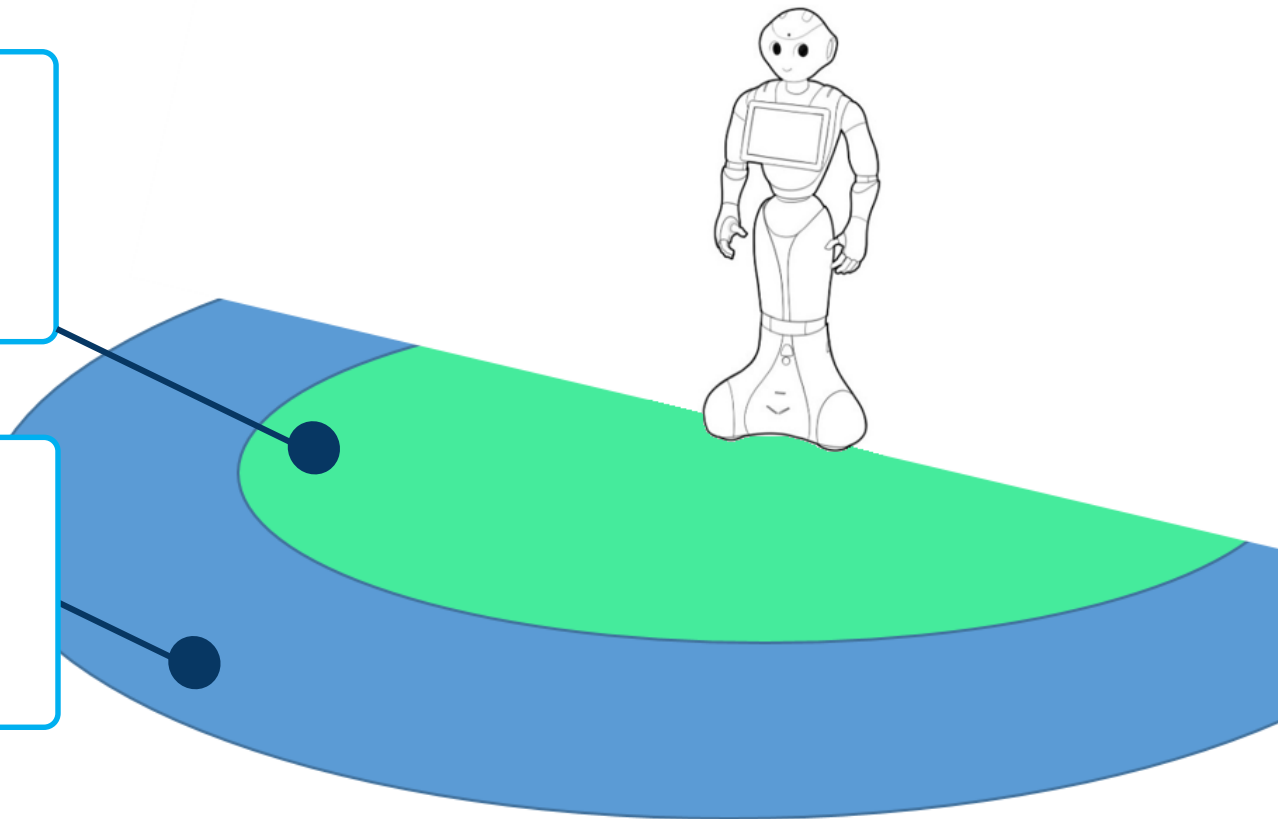


The background of the slide features a faded, light blue image of the Pepper robot. The robot is a small, white, humanoid figure with large, expressive eyes and a friendly appearance. It is positioned centrally, with its head and upper torso visible. The text is overlaid on this background.

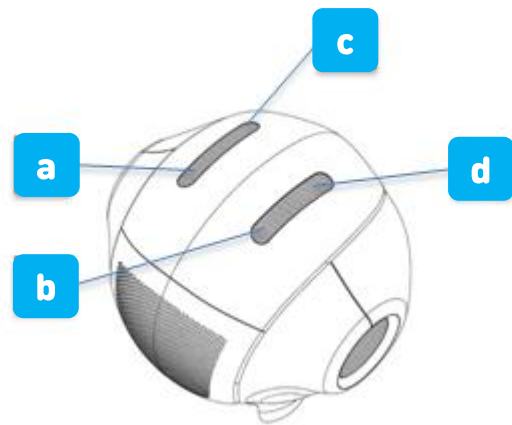
#5

Interaction with Pepper

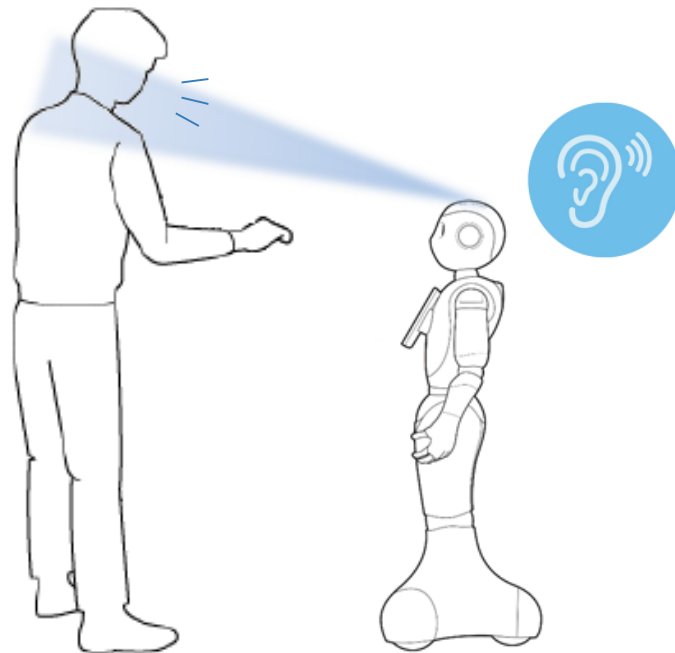
5 Interaction with Pepper – Engagement zone



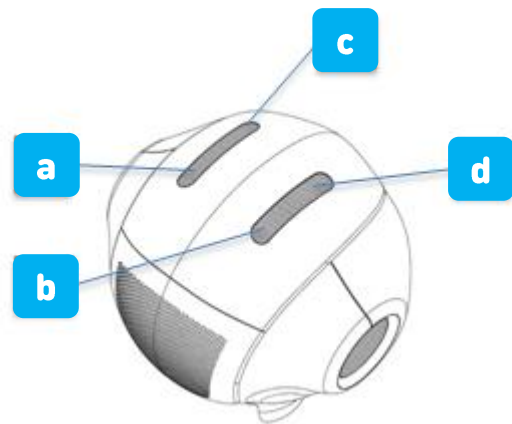
5 Interaction with Pepper – Microphones orientation



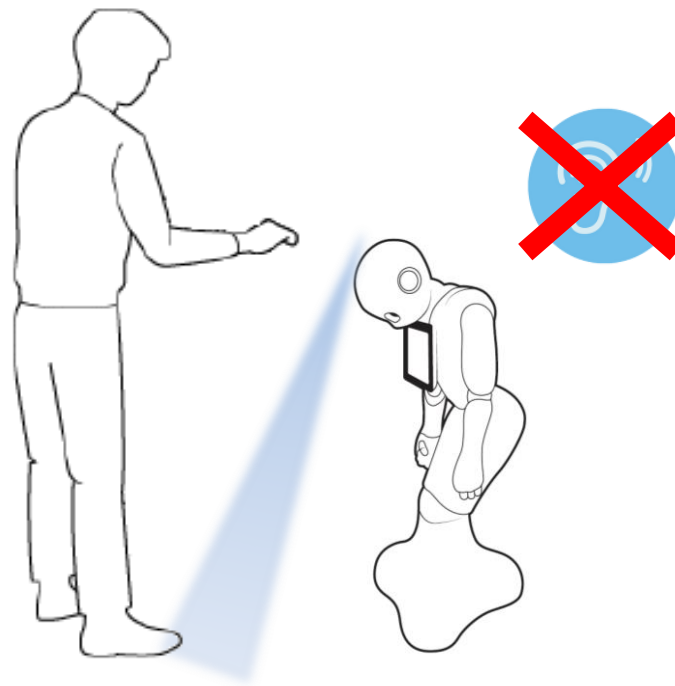
Microphones



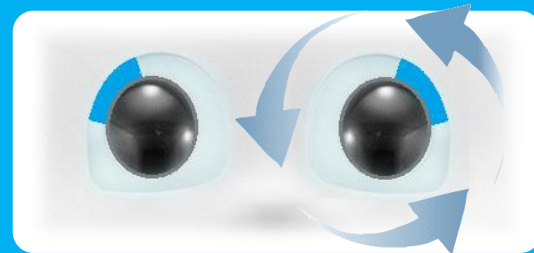
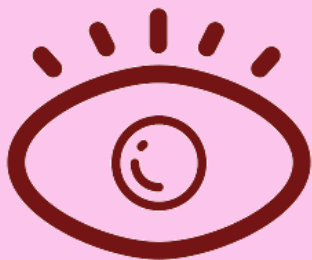
5 Interaction with Pepper – Microphones orientation



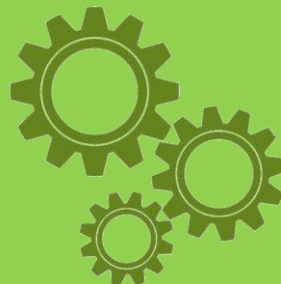
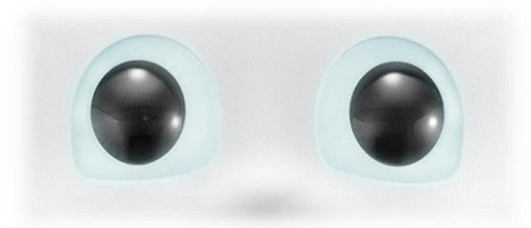
Microphones



5 Interaction with Pepper – Speaking with Pepper



Spinning blue





#6

Daily maintenance

6 Daily maintenance – Pepper is on the field

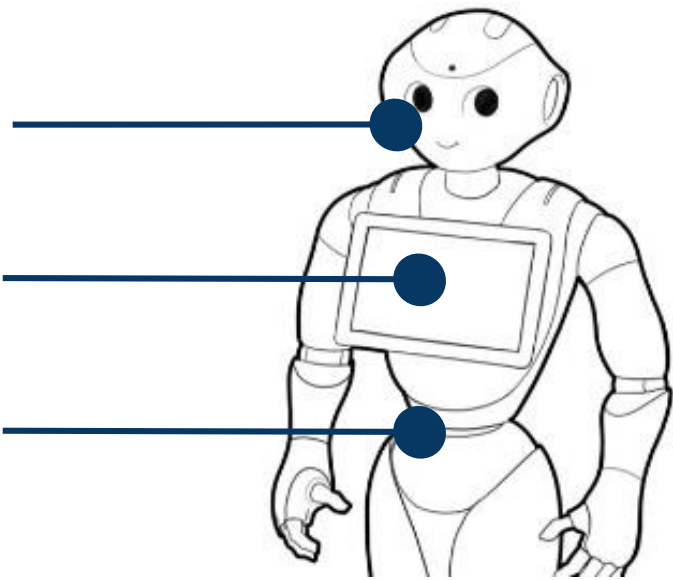


3~4 Patrols per day.
You should check if...

Pepper is **reacting** when it sees someone

Tablet is reacting to **touch input**

Pepper is still **ON**



6 Daily maintenance – Notifications



Starting
Up

Info

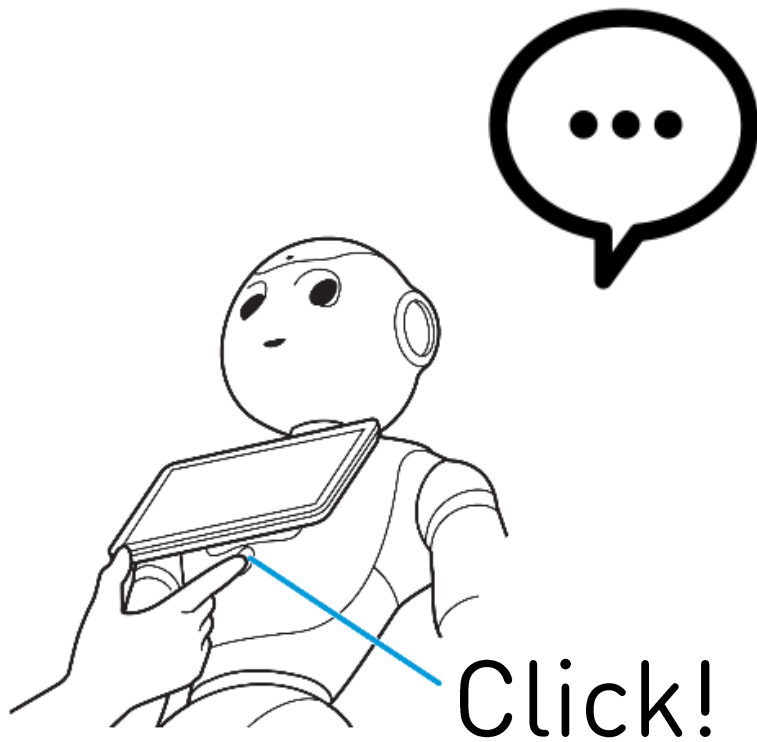


Error

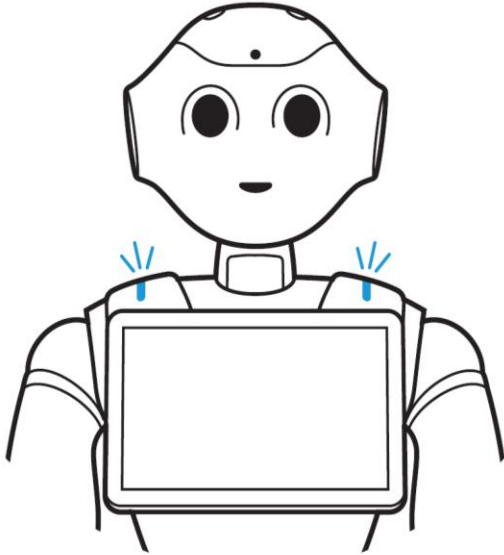
Warning



6 Daily maintenance – Notifications



6 Daily Maintenance – Reprogramming Pepper



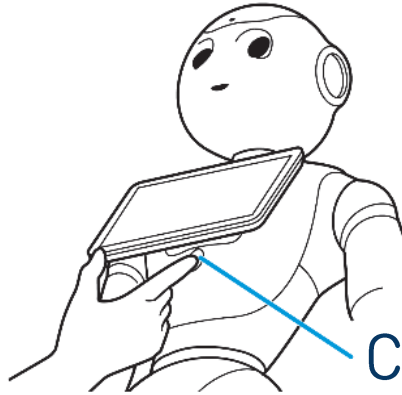
Reprogramming will make Pepper reinstall all its electronic cards firmware.

It has to be used **when** Pepper is having issues.

6 Daily Maintenance – Reprogramming Pepper



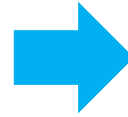
Pepper is
switched Off



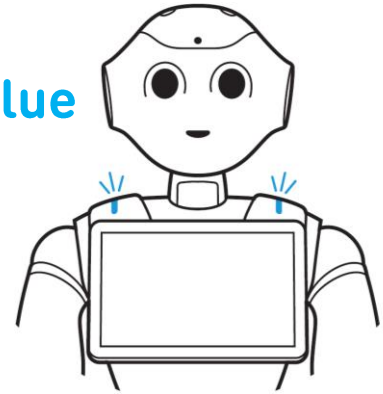
Click



6 seconds



Shoulders
should be
blinking blue

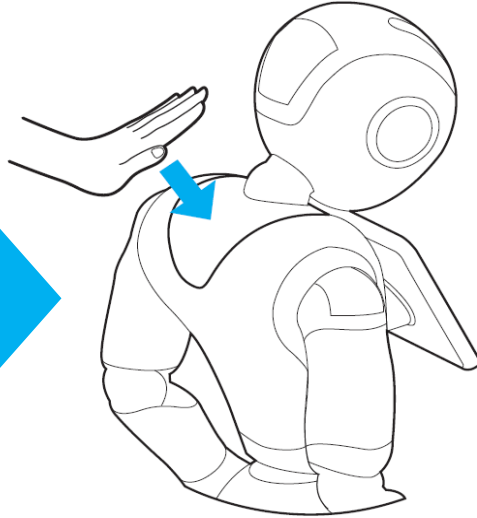


Start-up
should take
~10 minutes

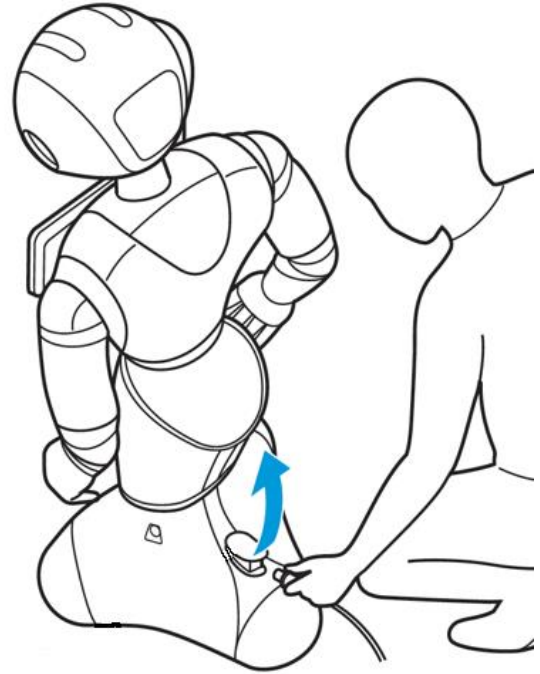
6 Daily maintenance – Pepper is stored



Pepper is
Switched Off



Push the
Stop Button

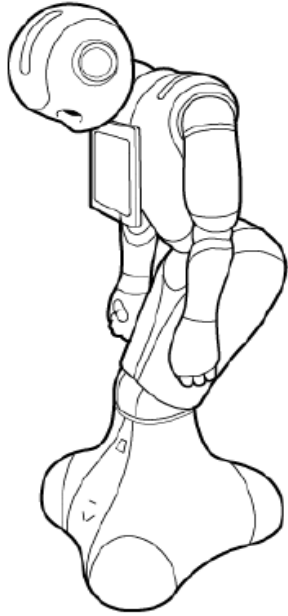


Charge Pepper

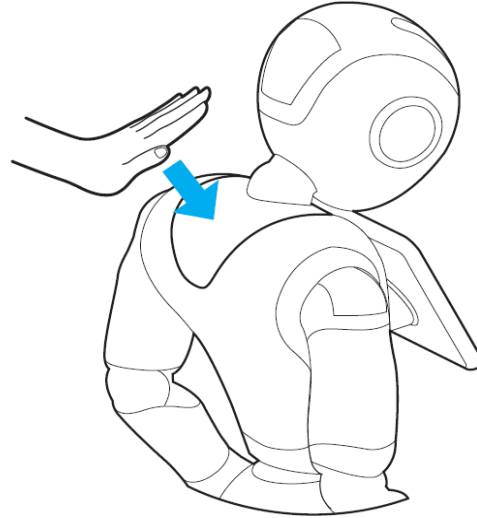
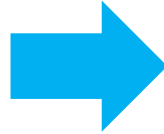
6 Daily maintenance – Cleaning Pepper

**You should
clean Pepper every day.**

6 Daily maintenance – Cleaning Pepper, preparation



Pepper is
Switched Off



Push the
Stop Button

6 Daily maintenance – Cleaning Pepper



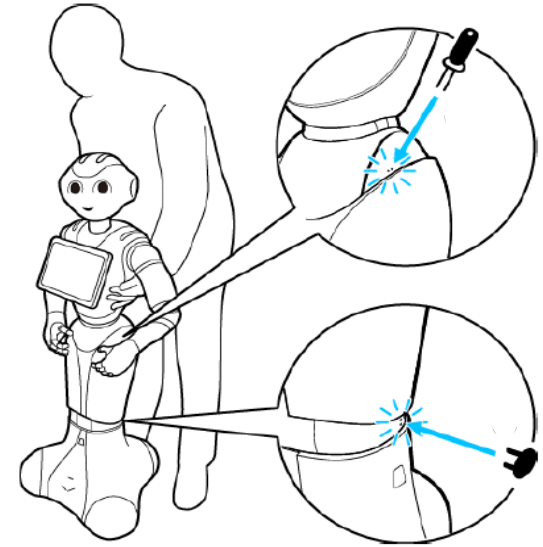
PVC cleaning wipes



Soft dry cloth



PC cleaning wipes



If necessary,
insert the **Pins**

6 Daily maintenance – Cleaning Pepper



No Water

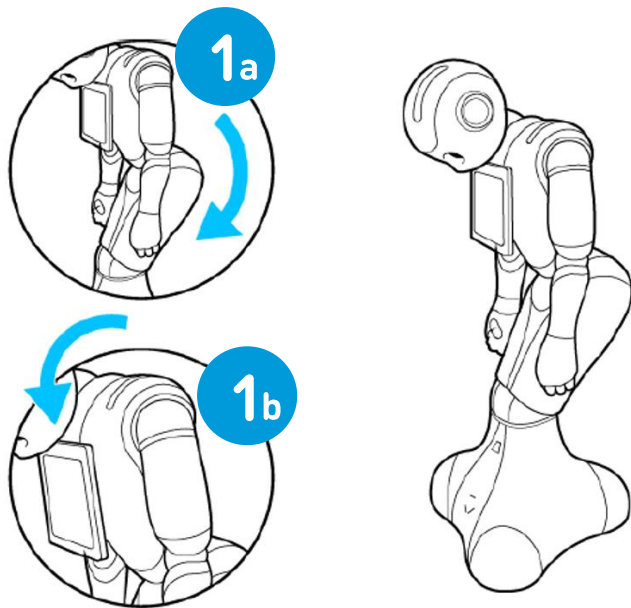


No abrasive product (alcohol or ammoniac based)

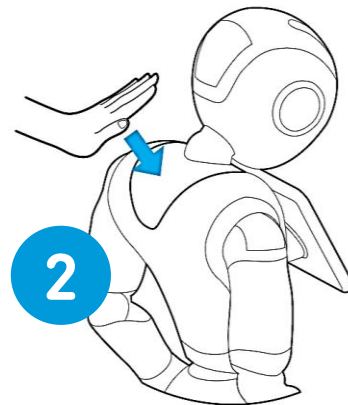
#7

Reboxing Pepper

7 Reboxing Pepper – Before you begin



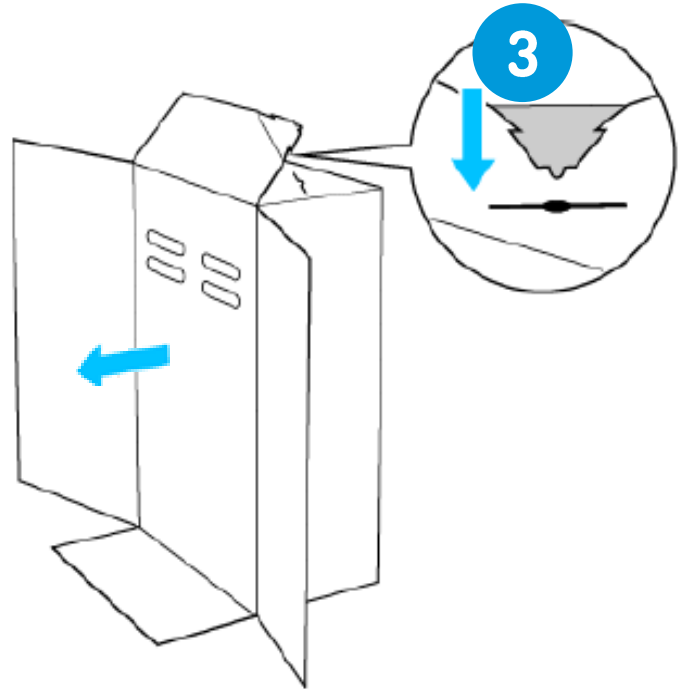
Pepper is
Switched Off



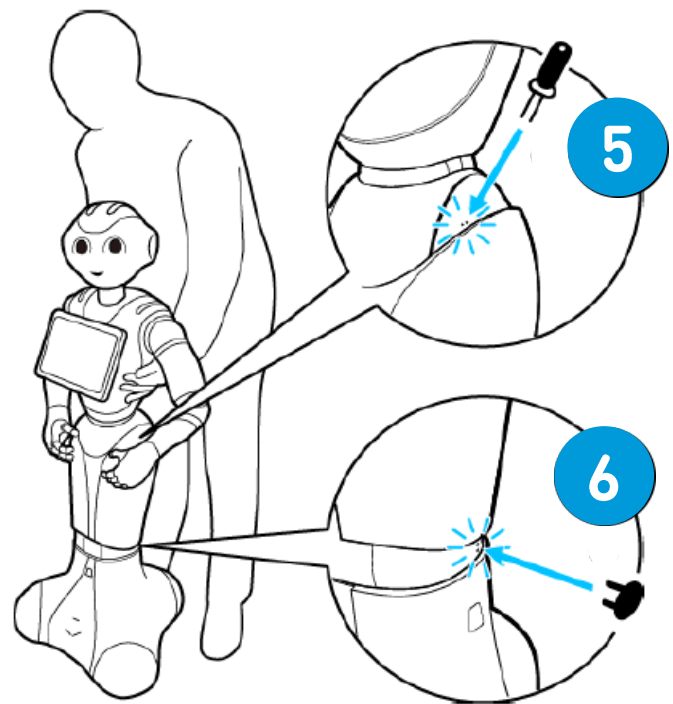
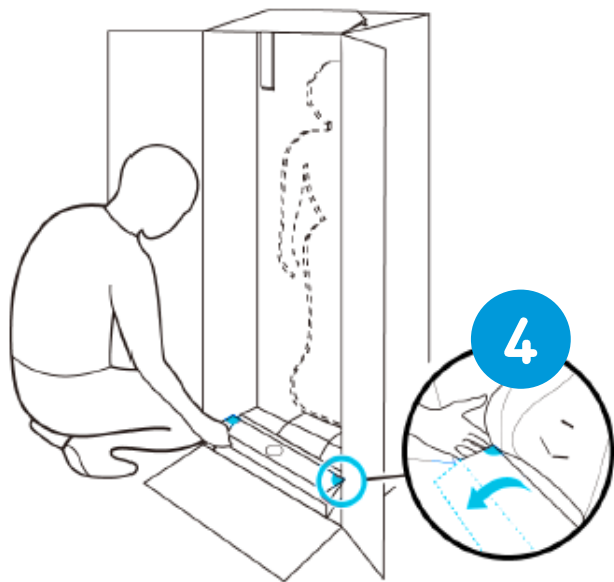
Stop Button is
pushed

7 Reboxing Pepper

Do it yourself!

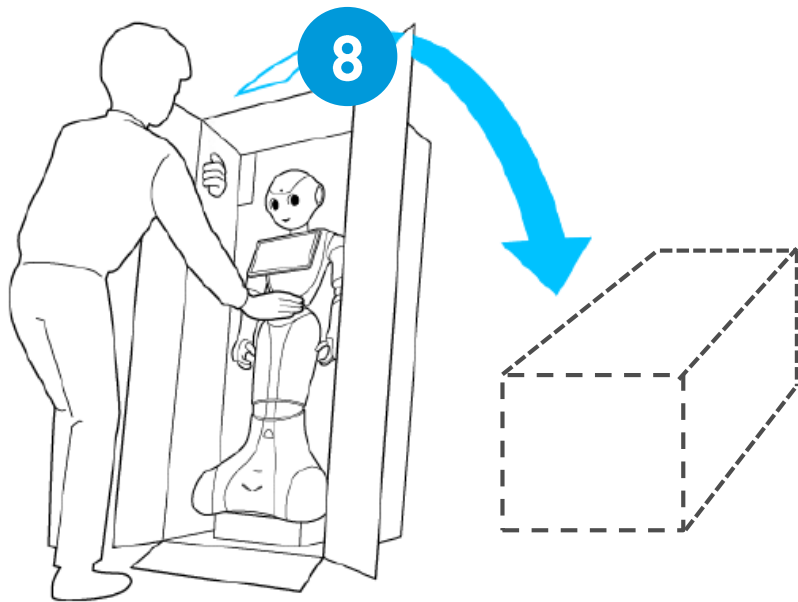


7 Reboxing Pepper

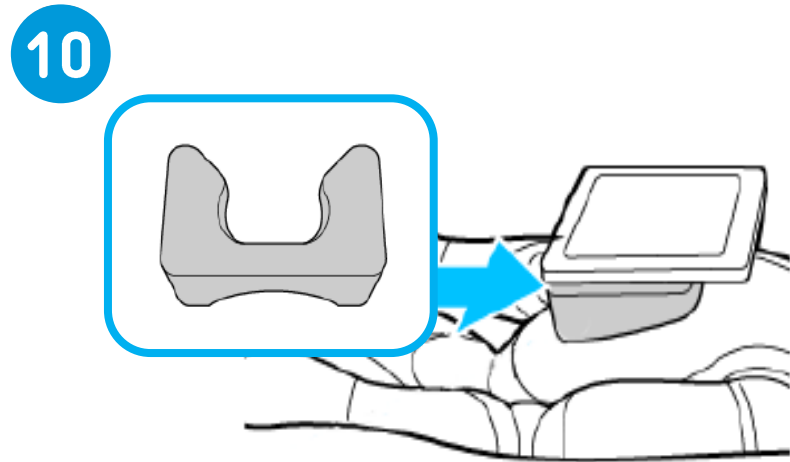
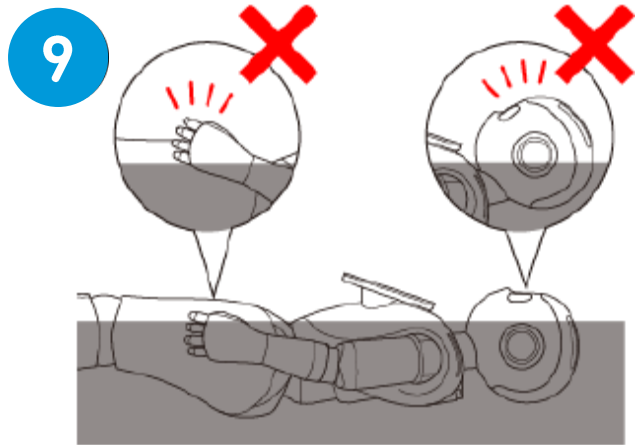


Insert the Pins

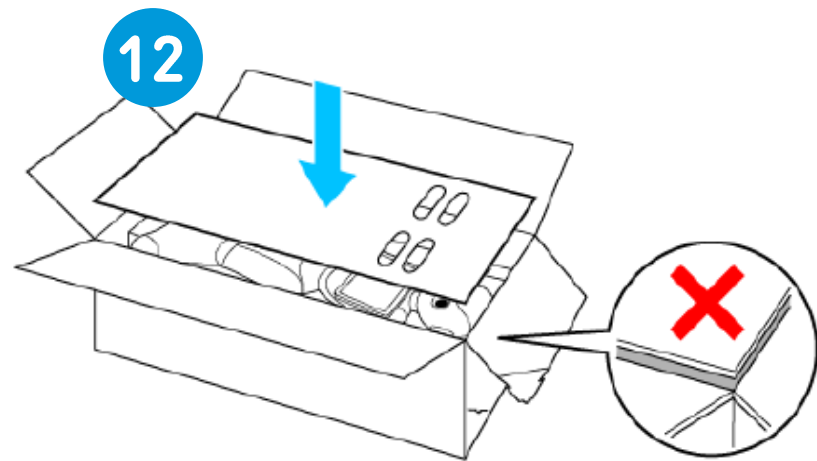
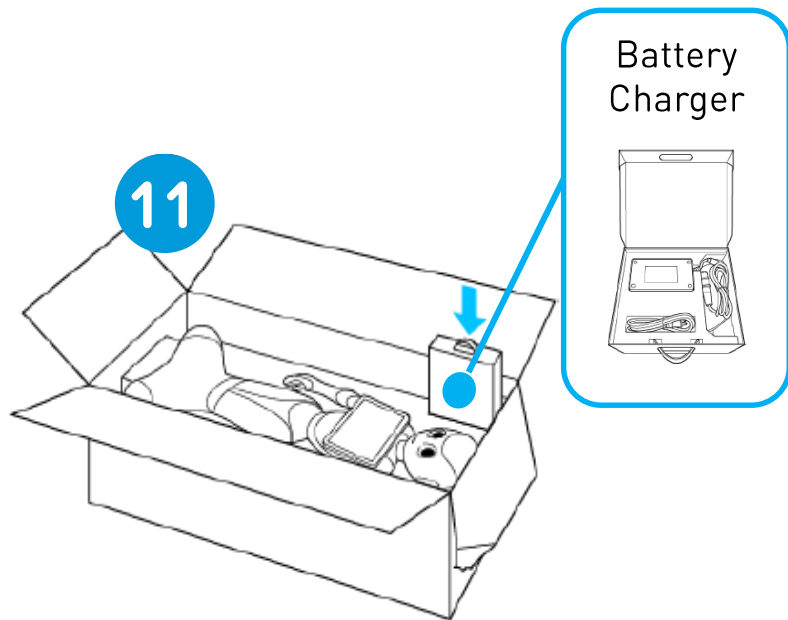
7 Reboxing Pepper



7 Reboxing Pepper



7 Reboxing Pepper





Questions ?